

# 1514 WASHINGTON

oconnordetroit.com/1514-Washington



NEIGHBORHOOD

**DOWNTOWN**

LOCATION

**NE CORNER OF WASHINGTON  
AND CLIFFORD**

SPACE TYPE

**OFFICE**

2,500 - 10,000 SF of furnished office space available. Located in a densely populated core CBD area with a mixture of office, multifamily, entertainment, shopping, and sporting venues all within walking distance. The Claridge House sits on the northeast corner of Washington Boulevard and Clifford Avenue adjacent to Grand Circus Park. The property sits along a streetscape area with a small brick-walk pedestrian park that provides access to the neighborhood and the nearby Grand Circus Park people mover station. Spaces features: hardwood floors, exposed ceilings, and lots of natural light.

ASKING RENT

---

**\$12 PER RSF MODIFIED GROSS**

SIZE

---

**2,500 - 10,000 RSF**

# 1514

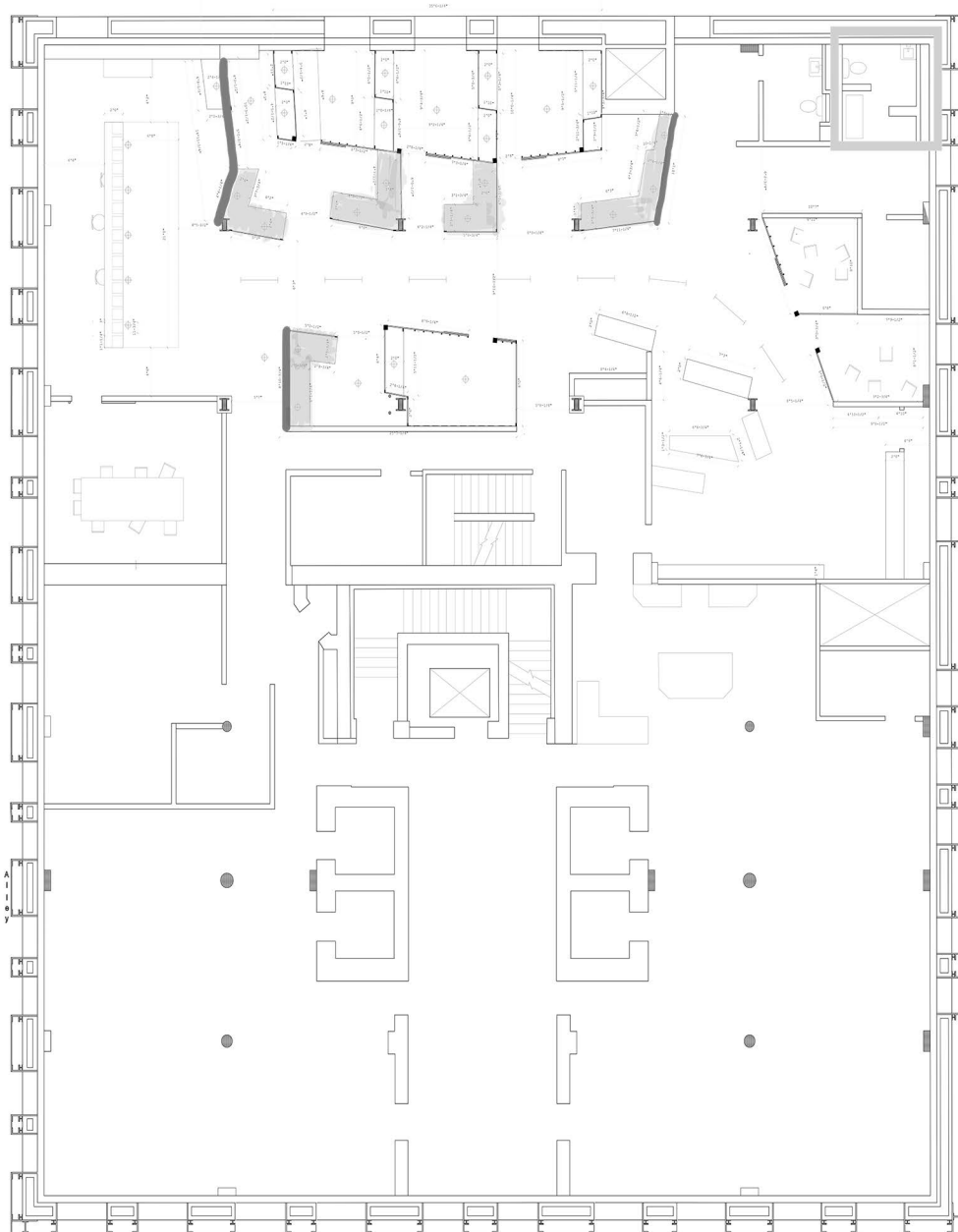
## WASHINGTON BLVD

Downtown

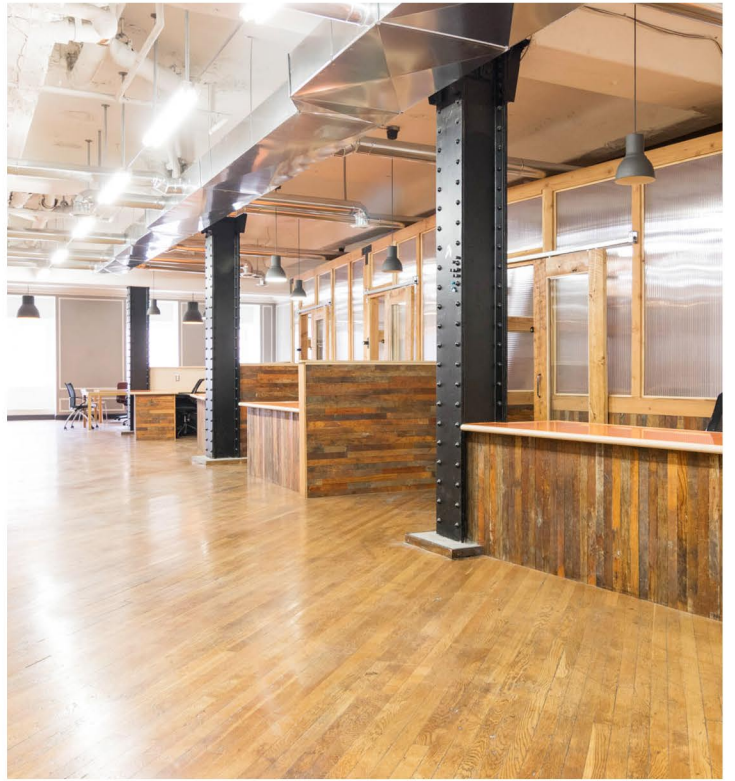
### FEATURES

2,500 - 10,000 Square Feet

Turnkey Office Space











**1514  
Washington  
Blvd**

2,500 - 10,000 SF  
Available

A TRUSTED AND RESPECTED  
MEMBER OF THE COMMUNITY,  
O'CONNOR REAL ESTATE  
BRINGS 20 YEARS OF  
EXPERIENCE AND EXPERTISE  
TO THE COMMERCIAL OFFICE  
AND RETAIL MARKET.

For more information about the office space  
available at 1514 Washington Blvd,  
please contact O'Connor Real Estate

**Vincent Mazzola**

**+ 313 704 2678**

**[vincent@oconnordetroit.com](mailto:vincent@oconnordetroit.com)**

**O'Connor** Real Estate

The information used in this marketing material was taken from sources believed to be reliable. O'Connor Real Estate makes no representation, warranty, or endorsement made as to the accuracy, reliability, adequacy, or completeness of any information or analysis contained herein and disclaims any and all liability that may be based on such information, errors therein or omissions therefrom. You and your advisors should conduct a careful and independent investigation of the property to determine your satisfaction with the suitability of the property for your needs.