



NEIGHBORHOOD

CORKTOWN

LOCATION

NE CORNER OF ROSA PARKS AND MICHIGAN AVENUE

SPACE TYPE

LAND

Centrally located at the hard corner of Michigan Avenue and Rosa Parks Boulevard, 1900 Michigan Avenue sits directly across the street from Ford's Corktown Campus. The current feasibility study allows for up to three stories with first floor retail and either residential or office on floors 2-3. The site also lends itself well to a standalone retail development with great visibility on Michigan Avenue and direct access to I-75 from Rosa Parks.

ASKING PRICE

\$1,200,000

ADDRESS

1900 Michigan Ave, Detroit, MI 48216

LOT SIZE

.37 Acres (16,261 SF)

ZONING

B4

NEIGHBORS

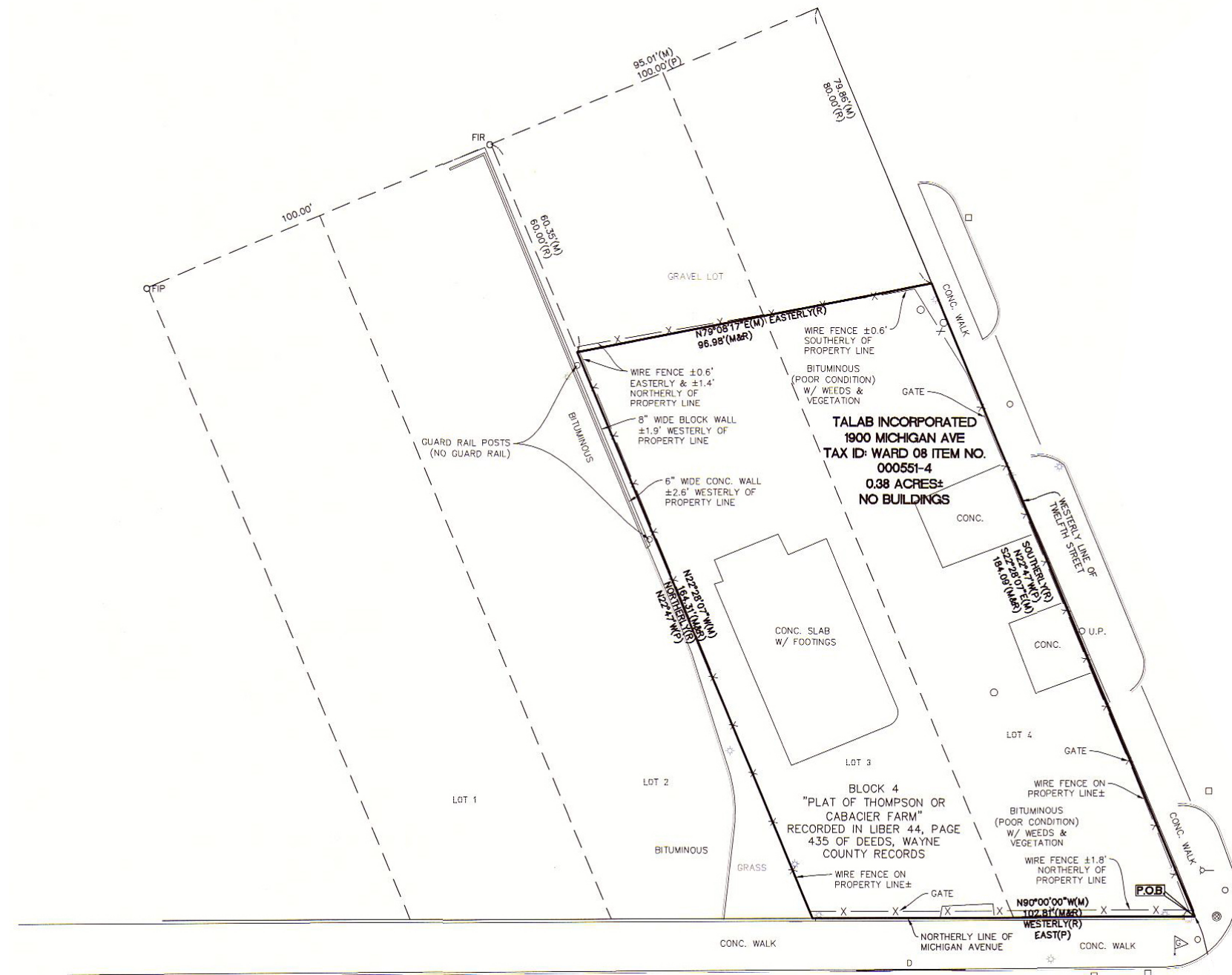
Ford Motor Company, Michigan Central Station, Alpino, Folk, Meta Physica Wellness Center, Rocket Data Center, Level 3 Communications, Southwest Greenway, Honeybee Market, Slows BBQ, Airspace Link, Ford Motor Co.'s Book Depository, New Lab Michigan Central, Detroit Bus Company, IMA, Metropolis Cycles, Mercury Burger Bar, Grandma Bob's, Corktown Health Center, Detroit Public Safety Academy and UPS Detroit International Import Hub.

PROPERTY HIGHLIGHTS

Zoned B4

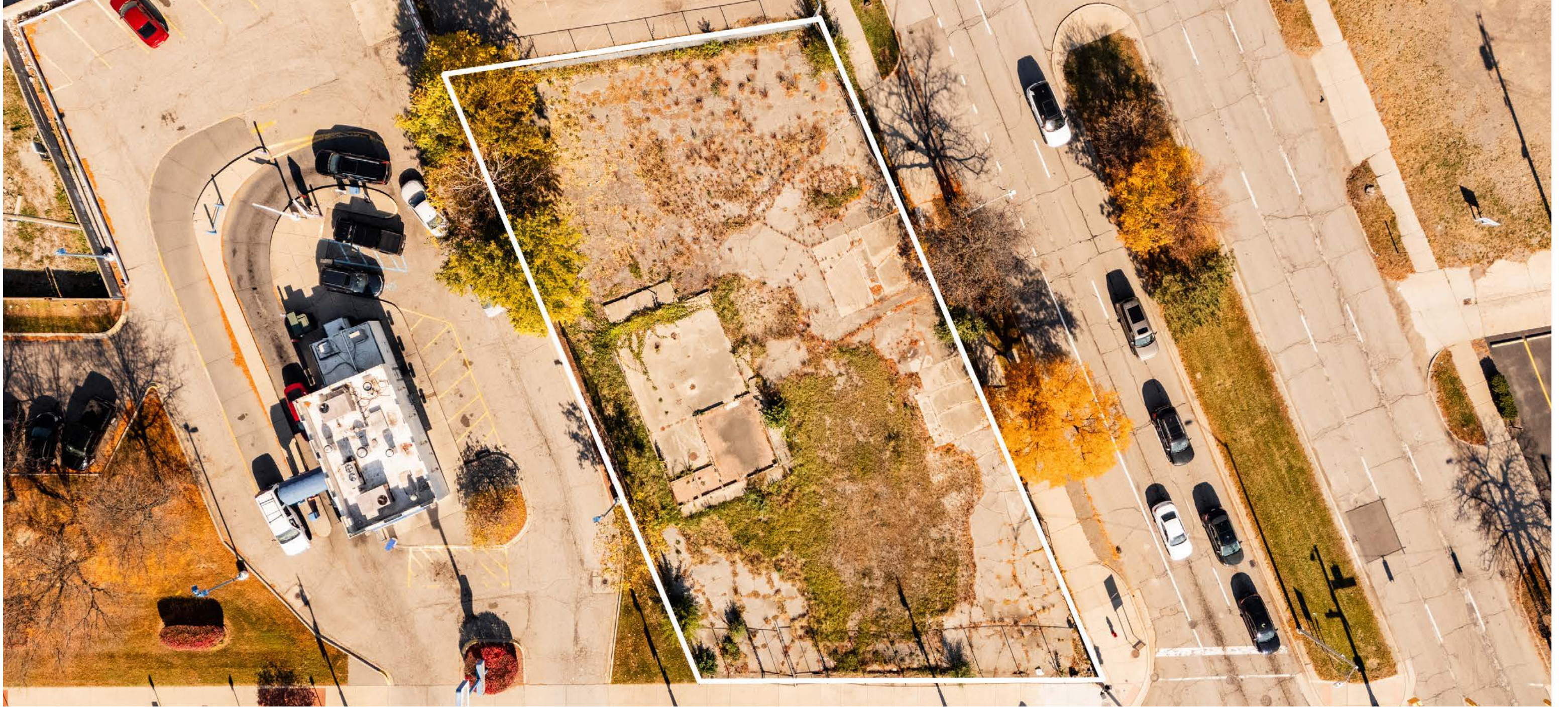
100' frontage on Rosa Parks Boulevard

Located 1 mile from Detroit's Central Business District and within blocks of popular restaurants and bars, including Slows BBQ, Sugar House, Mercury Bar, and Ima









AREA DEVELOPMENTS



Hudson's Site

Hailed as the city's most significant development in decades, the development of the former Hudson's site in the Central Business District will include 1.5 million square feet of office, retail, restaurant, hotel, residential, and event spaces. Construction of the city's second-tallest skyscraper is expected to be completed in 2024.



Ford's Michigan Central Station

Ford's Michigan Central Station is currently undergoing a nearly \$1 billion renovation. Ford's Corktown Campus promises to bring over 5,000 new jobs to the neighborhood and will create a need for 1,100 new residential units.



Gordie Howe International Bridge

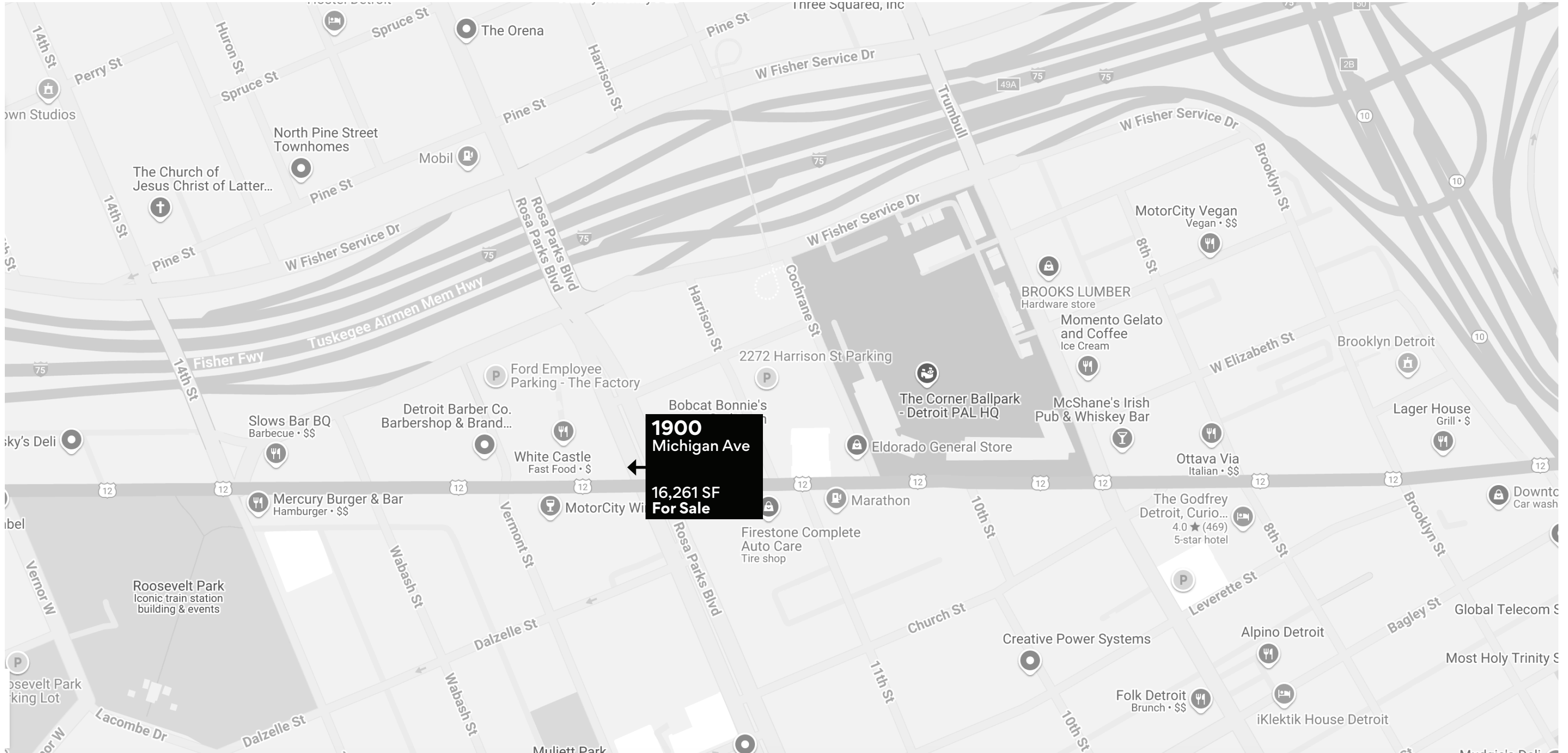
The new Detroit-Windsor bridge will facilitate trade and travel across the busiest international crossing in North America, providing uninterrupted freeway traffic flow between the two countries. When completed in 2025, the 1.5-mile crossing will feature six lanes of travel, a dedicated pedestrian/cycling path, and new ports of entry.

CORKTOWN

Named by the Irish immigrants who originally settled here, Corktown is the oldest neighborhood in Detroit. Full of candy-colored Victorians, shotguns and townhomes, the historic residential district is complemented by thriving commercial avenues. It's also the home of Ford's revitalized Michigan Central Station and all the innovation and investment that comes with it. Steps from Downtown and a stone's throw from the Detroit River, Corktown's desirable and convenient location offers residents unmatched walkability of dense urban fabric, ranging from restaurants and bars to the expansive west Riverfront project currently underway.

O'Connor Real Estate





A TRUSTED AND RESPECTED
MEMBER OF THE COMMUNITY,
O'CONNOR REAL ESTATE
BRINGS 20 YEARS OF
EXPERIENCE AND EXPERTISE
TO THE COMMERCIAL OFFICE
AND RETAIL MARKET.

For more information about 1900 Michigan Ave,
please contact O'Connor Real Estate

Sloane Walsh

+ 248 227 0182

+ 313 963 9891

sloane@oconnordetroit.com

O'Connor Real Estate

The information used in this marketing material was taken from sources believed to be reliable. O'Connor Real Estate makes no representation, warranty, or endorsement made as to the accuracy, reliability, adequacy, or completeness of any information or analysis contained herein and disclaims any and all liability that may be based on such information, errors therein or omissions therefrom. You and your advisors should conduct a careful and independent investigation of the property to determine your satisfaction with the suitability of the property for your needs.